

# Very Wideband RF Choke

50 to 10000 MHz

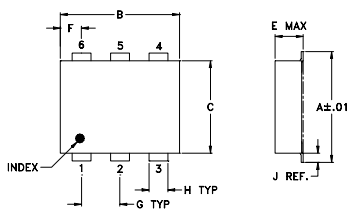
## Maximum Ratings

Operating Temperature	-40°C to 85°C
Storage Temperature	-55°C to 100°C
DC Current	250 mA

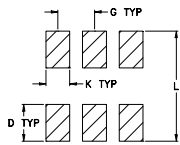
## Pin Connections

RF-IN & DC	2
DC	5
NOT USED	1,3,4,6

## Outline Drawing



### PCB Land Pattern

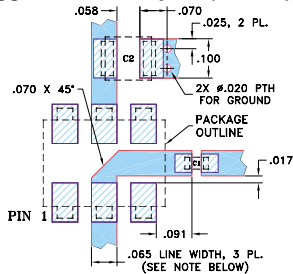


Suggested Layout,  
Tolerance to be within ±.002

## Outline Dimensions (inch)

A	B	C	D	E	F	G
.272	.310	.220	.100	.112	.055	.100
6.91	7.87	5.59	2.54	2.84	1.40	2.54
H	J	K	L	wt		
.030	.026	.065	.300	grams		
0.76	0.66	1.65	7.62	0.20		

## Demo Board MCL P/N: TB-52 Suggested PCB Layout (PL-210)



CAPACITORS: C1: 6800 pF, 0603 SIZE; C2: 1.0 uF, 1311 SIZE.

NOTES: 1. TRACE WIDTH IS SHOWN FOR ROGERS RO4350B WITH DIELECTRIC THICKNESS .030" ± .002"; COPPER: 1/2 OZ. EACH SIDE. FOR OTHER MATERIALS TRACE WIDTH MAY NEED TO BE MODIFIED.  
2. BOTTOM SIDE OF THE PCB IS CONTINUOUS GROUND PLANE.

- DENOTES PCB COPPER LAYOUT WITH SMOBC (SOLDER MASK OVER BARE COPPER)
- DENOTES COPPER LAND PATTERN FREE OF SOLDER MASK

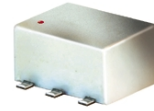
## Features

- low parasitic capacitance 0.1 pf typ.
- effective parallel resistance, Rch 800 ohm typ.
- protected by US Patent, 6,133,525

## Applications

- biasing amplifiers
- biasing of laser diodes
- biasing of active antennas

**ADCH-80+  
ADCH-80**



CASE STYLE: CD542  
PRICE: \$2.75 ea. QTY (10-49)

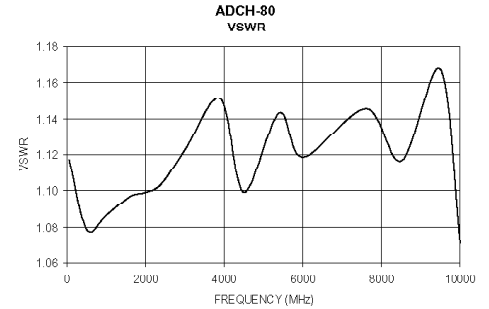
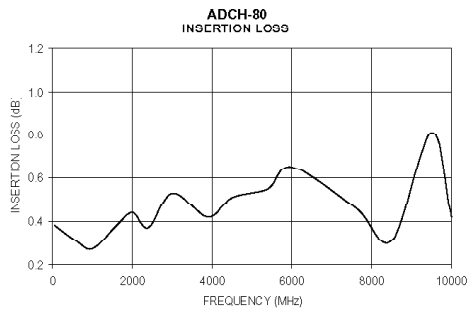
**+ RoHS compliant in accordance  
with EU Directive (2002/95/EC)**

The +Suffix identifies RoHS Compliance. See our web site for RoHS Compliance methodologies and qualifications.

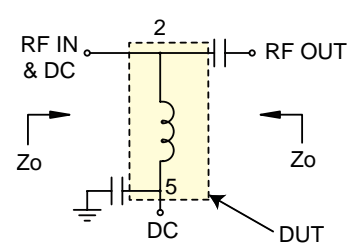
## Electrical Specifications

MODEL NO.	FREQUENCY (MHz)	INSERTION LOSS* (dB)		VSWR* (:1)		DC CURRENT (mA)	INDUCTANCE (uH)		
		Typ.	Max.	Typ.	Max.		@ 0 mA	@ 50 mA	@ 100 mA
ADCH-80(+)	50-8000	0.3	1.0	1.1	1.35	100	7.0	1.8	1.0
	50-10000	0.3	2.0	1.1	1.6	100	7.0	1.8	1.0

\*tested with circuit shown below, Zo=50 ohms



## TEST CIRCUIT\*



**Mini-Circuits®**

Distribution Centers NORTH AMERICA 800-654-7949 • 417-335-5935 • Fax 417-335-5945 • EUROPE 44-1252-832600 • Fax 44-1252-837010

Mini-Circuits ISO 9001 & ISO 14001 Certified

INTERNET <http://www.minicircuits.com>



REV. C  
M98898  
ADCH-80  
ED-7562/2  
DJ/TD/CP  
060616